

Globaltec Electronics Ltd

HOW TO UPDATE FIRMWARE FOR LAPIS / OKI UEASE EMULATOR

uEASE FIRMWARE UPDATE

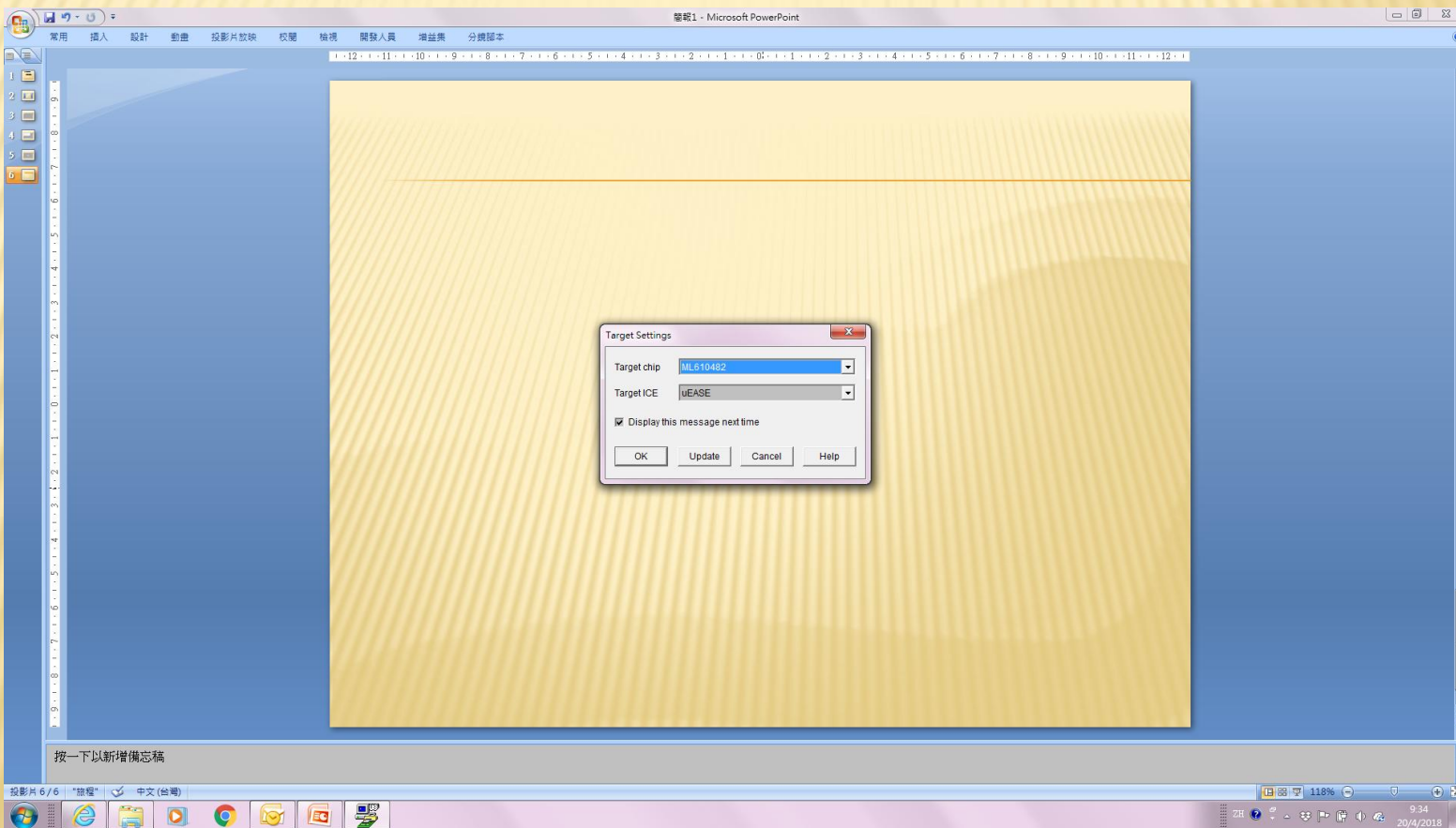
- ✘ **Notice**
- ✘ If uEASE cannot show up your application MCU, you may need to update the firmware.
- ✘ Please check with your uEASE firmware version before update.
- ✘ Run DUT8 debugger , select help menu>system info, it will show up firmware version.
- ✘ Latest firmware is version 3.21 with filename (uEASE_Firmware_Ver321.ueb)

STEP 1

- ✘ Connect uEASE to PC with application MCU eav board
- ✘ This update method is only applicable to
 - + uEASE with brand OKI Semiconductor version 2.0 or
 - + Lapis Semiconductor version.
- ✘ This method do not applicable to uEASE 1000.
- ✘ Install DTU8 debugger.
- ✘ Get latest firmware from Lapis support site or from us.
- ✘ When ready, run DTU8 debugger
- ✘ Move to step 2.

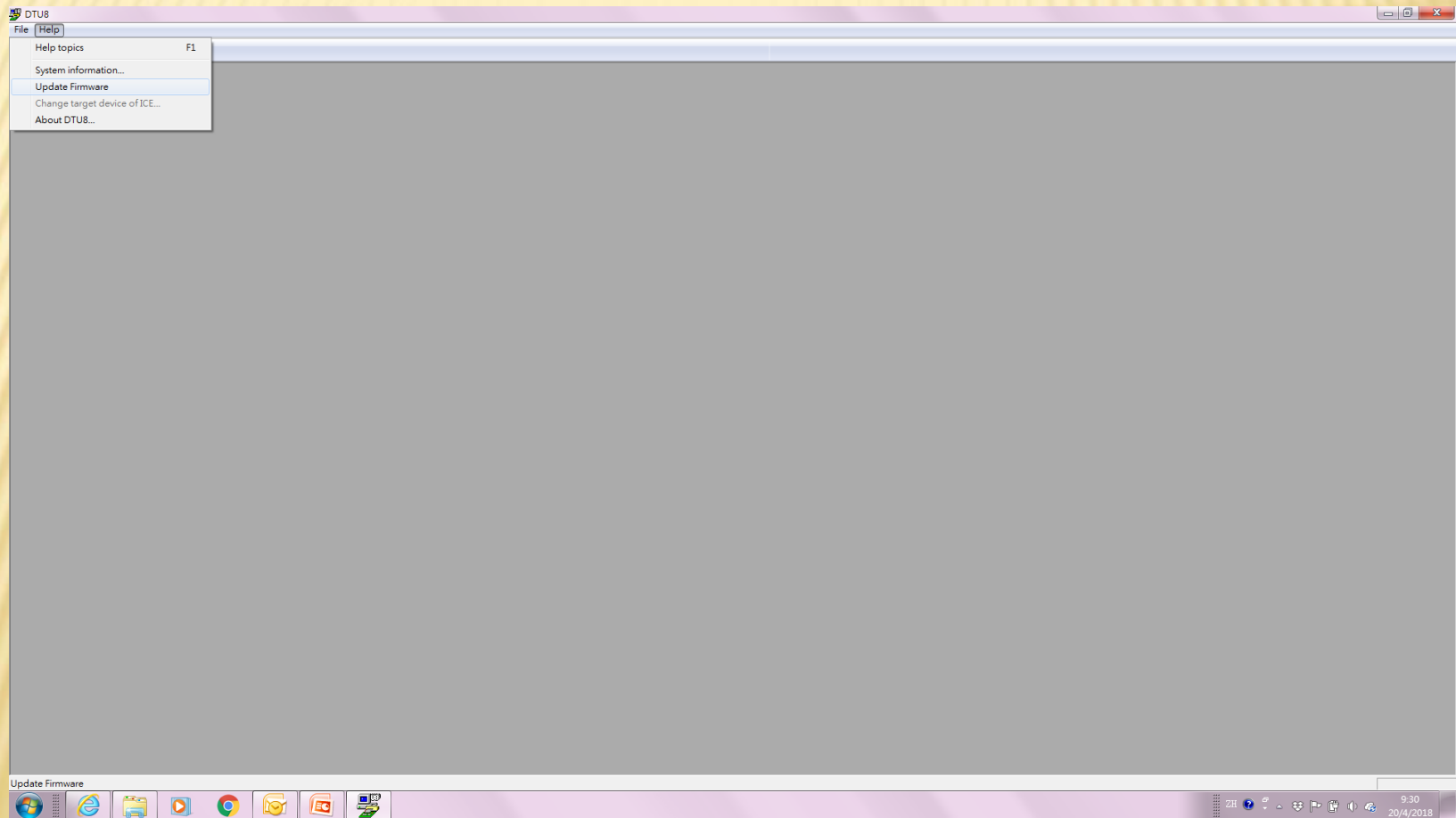
STEP 2 UPDATE BUTTON

After run DTU8 Debugger, Target Setting dialog shown with four select buttons at the bottom, press update button.



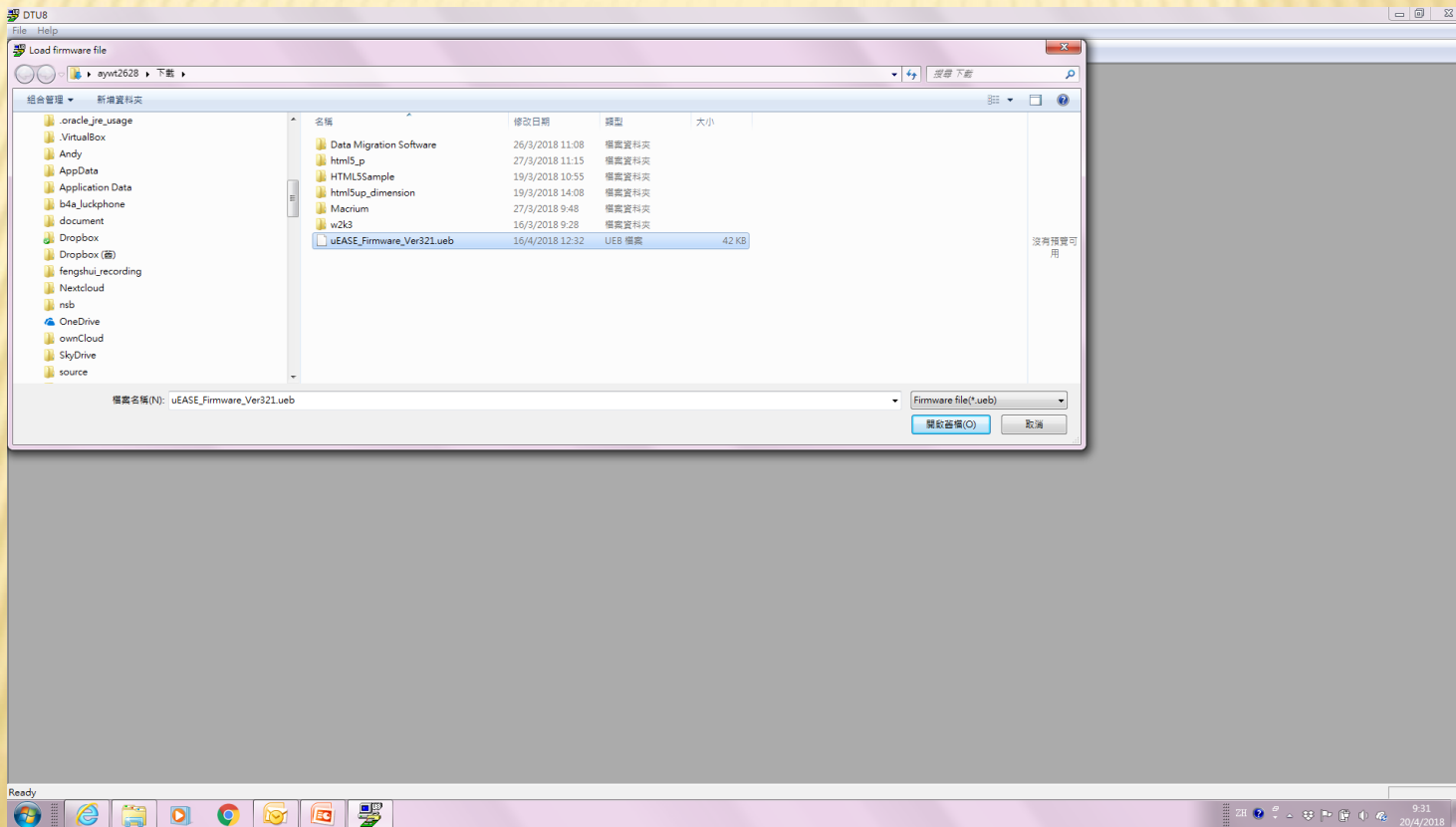
STEP 3 UPDATE FIRMWARE

In the help menu, select Update Firmware



STEP 4. FIRMWARE LOCATION

After selected update firmware, select firmware location and press open. Once pressed open, firmware update will process and finish in second.



STEP 5 UPDATE FINISH

Press Confirm. Remove USB cable and connect again to reset the uEASE. Firmware update finished

